

**28-Port 10/100/1000Mbps
Gigabit Ethernet
Web Smart Switch**

with

2×1000BASE-T, 24×10/100BASE-TX ports

2 optional mini-GBIC ports

User's Guide

FCC Warning

This equipment has been tested and found to comply with the regulations for a Class A digital device, pursuant to Part 15 of the FCC Rules. These limits are designed to provide reasonable protection against harmful interference when the equipment is operated in a commercial environment. This equipment generates, uses, and can radiate radio frequency energy and, if not installed and used in accordance with this user's guide, may cause harmful interference to radio communications. Operation of this equipment in a residential area is likely to cause harmful interference, in which case the user will be required to correct the interference at his or her own expense.

CE Mark Warning

This is a Class A product. In a domestic environment, this product may cause radio interference, in which case the user may be required to take adequate measures.

VCCI Warning

This is a product of VCCI Class A Compliance.

注意

この装置は、情報処理装置等電波障害自主規制協議会(VCCI)の基準に基づく第一種情報技術装置です。この装置を家庭環境で使用すると電波妨害を引き起こすことがあります。この場合には使用者が適切な対策を講ずるよう要求されることがあります。

UL Warning

- a) Elevated Operating Ambient Temperature- If installed in a closed or multi-unit rack assembly, the operating ambient temperature of the rack environment may be greater than room ambient. Therefore, consideration should be given to installing the equipment in an environment compatible with the manufacturer's maximum rated ambient temperature (T_{mra}).
- b) Reduced Air Flow- Installation of the equipment in a rack should be such that the amount of air flow required for safe operation of the equipment is not compromised.
- c) Mechanical Loading- mounting of the equipment in the rack should be such that a hazardous condition is not achieved due to uneven mechanical loading.
- d) Circuit Overloading- Consideration should be given to the connection of the equipment to the supply circuit and the effect that overloading of circuits might have on over current protection and supply wiring. Appropriate consideration of equipment nameplate ratings should be used when addressing this concern.
- e) Reliable Earthing- Reliable earthing of rack-mounted equipment should be maintained. Particular attention should be given to supply connections other than direct connections to the branch circuit (e.g., use of power strips).

TABLE OF CONTENT

About This Guide.....	1
Purpose	1
Terms/Usage	1
Introduction.....	3
Gigabit Ethernet Technology	3
Fast Ethernet Technology	4
Switching Technology	5
VLAN (Virtual Local Area Network).....	6
Features	6
Unpacking and Installation	9
Unpacking.....	9
Installation	9
Rack Mounting	10
Connecting Network Cable.....	11
AC Power.....	11
Identifying External Components	13
Front Panel.....	13
Rear Panel	14
Understanding LED Indicators	15
Power and System LEDs	15
Ports 1~24 10/100M Status LEDs.....	16
Ports 25~26 Gigabit Status LEDs	16
Ports 27~28 mini-GBIC Status LEDs	17

Configuration	19
Installing the Web Management Utility	19
Discovery List.....	20
Monitor List	21
Device Setting.....	23
Toolbar.....	24
Configuring the Switch	25
Login.....	26
Setup Menu	28
Configuring Setup Setting.....	28
Port Settings	28
VLAN Settings (Virtual Local Area Network)	30
Trunk Setting	31
Mirror Setting.....	31
Device Status	32
Statistic.....	32
System Setting	34
Trap Setting.....	34
Set Password	35
Backup Setting	36
Reset Setting	37
Logout.....	37
Technical Specifications	39

ABOUT THIS GUIDE

Congratulations on your purchase of the 24+4G-Port 10/100/1000Mbps Gigabit Ethernet Web Smart Switch. This device integrates 1000Mbps Gigabit Ethernet, 100Mbps Fast Ethernet and 10Mbps Ethernet network capabilities in a highly flexible package.

Purpose

This guide discusses how to install your 24+4G-Port 10/100/1000Mbps Gigabit Ethernet Web Smart Switch.

Terms/Usage

In this guide, the term “Switch” (first letter upper case) refers to your 24+4G-Port 10/100/1000Mbps Gigabit Ethernet Web Smart Switch, and “switch” (first letter lower case) refers to other Ethernet switches.

INTRODUCTION

This chapter describes the features of the 24+4G-Port 10/100/1000Mbps Gigabit Ethernet Web Smart Switch and some background information about Ethernet/Fast Ethernet/Gigabit Ethernet switching technology.

Gigabit Ethernet Technology

Gigabit Ethernet is an extension of IEEE 802.3 Ethernet utilizing the same packet structure, format, and support for CSMA/CD protocol, full duplex, flow control, and management objects, but with a tenfold increase in theoretical throughput over 100-Mbps Fast Ethernet and a hundredfold increase over 10-Mbps Ethernet. Since it is compatible with all 10-Mbps and 100-Mbps Ethernet environments, Gigabit Ethernet provides a straightforward upgrade without wasting a company's existing investment in hardware, software, and trained personnel.

The increased speed and extra bandwidth offered by Gigabit Ethernet is essential to coping with the network bottlenecks that frequently develop as computers and their busses get faster and more users use applications that generate more traffic. Upgrading key components, such as your backbone and servers to Gigabit Ethernet can greatly improve network response times as well as significantly speed up the traffic between your subnets.

Gigabit Ethernet enables fast optical fiber connections to support video conferencing, complex imaging, and similar data-intensive applications. Likewise, since data transfers occur 10 times faster than Fast Ethernet, servers outfitted with Gigabit Ethernet NIC's are able to perform 10 times the number of operations in the same amount of time.

In addition, the phenomenal bandwidth delivered by Gigabit Ethernet is the most cost-effective method to take advantage of today and tomorrow's rapidly improving switching and routing internetworking technologies. And with expected advances in the coming years in silicon technology and digital signal processing that will enable Gigabit Ethernet to eventually operate over unshielded twisted-pair (UTP) cabling, outfitting your network with a powerful 1000-Mbps-capable backbone/server connection creates a flexible foundation for the next generation of network technology products.

Fast Ethernet Technology

The growing importance of LANs and the increasing complexity of desktop computing applications are fueling the need for high performance networks. A number of high-speed LAN technologies have been proposed to provide greater bandwidth and improve client/server response times. Among them, 100BASE-T (Fast Ethernet) provides a non-disruptive, smooth evolution from the current 10BASE-T technology. The non-disruptive and smooth evolution nature, and the dominating potential market base, virtually guarantees cost-effective and high performance Fast Ethernet solutions.

100Mbps Fast Ethernet is a standard specified by the IEEE 802.3 LAN committee. It is an extension of the 10Mbps Ethernet standard with the ability to transmit and receive data at 100Mbps, while maintaining the CSMA/CD Ethernet protocol. Since the 100Mbps Fast Ethernet is compatible with all other 10Mbps Ethernet environments, it provides a straightforward upgrade and takes advantage of the existing investment in hardware, software, and personnel training.

Switching Technology

Another approach to pushing beyond the limits of Ethernet technology is the development of switching technology. A switch bridges Ethernet packets at the MAC address level of the Ethernet protocol transmitting among connected Ethernet or Fast Ethernet LAN segments.

Switching is a cost-effective way of increasing the total network capacity available to users on a local area network. A switch increases capacity and decreases network loading by dividing a local area network into different segments, which don't compete with each other for network transmission capacity.

The switch acts as a high-speed selective bridge between the individual segments. The switch, without interfering with any other segments, automatically forwards traffic that needs to go from one segment to another. By doing this the total network capacity is multiplied, while still maintaining the same network cabling and adapter cards.

Switching LAN technology is a marked improvement over the previous generation of network bridges, which were characterized by higher latencies. Routers have also been used to segment local area networks, but the cost of a router, the setup and maintenance required make routers relatively impractical. Today switches are an ideal solution to most kinds of local area network congestion problems.

VLAN (Virtual Local Area Network)

A VLAN is a group of end-stations that are not constrained by their physical location and can communicate as if a common broadcast domain, a LAN. The primary utility of using VLAN is to reduce latency and need for routers, using faster switching instead. Other VLAN utility includes:

Security, Security is increased with the reduction of opportunity in eavesdropping on a broadcast network because data will be switched to only those confidential users within the VLAN.

Cost Reduction, VLANs can be used to create multiple broadcast domains, thus eliminating the need of expensive routers.

Port-based (or port-group) VLAN is the common method of implementing a VLAN, and is the one supplied in the Switch.

Features

- ◆ 24×10/100Mbps Auto-negotiation Fast Ethernet RJ45 ports
- ◆ 2×10/100/1000Mbps Auto-negotiation Gigabit RJ45 ports
- ◆ 2×mini-GBIC ports
- ◆ All RJ45 ports support auto MDI/MDIX, so there is no need to use cross-over cables or an up-link port
- ◆ Full/half duplex transfer mode for 10/100Mbps RJ45 port
- ◆ Full duplex transfer mode for Gigabit port
- ◆ Wire speed reception and transmission
- ◆ Store-and-Forward switching scheme capability to support rate adaptation and ensure data integrity

- ◆ Up to 4K unicast addresses entities per device, self-learning, and table aging
- ◆ 768KBytes packet buffer
- ◆ Supports IEEE 802.3x flow control for full-duplex mode ports
- ◆ Supports Back-pressure flow control for half-duplex mode ports
- ◆ Supports port-base VLAN
- ◆ Supports port-base QoS
- ◆ Supports Trunking on 1000BASE-T ports
- ◆ Supports Port-mirroring
- ◆ Supports Port-setting for Speed/Disable, Flow control
- ◆ Easy configuration via WEB Browser
- ◆ Easy setting via Web Management Utility
- ◆ Standard 19” Rack-mount size

UNPACKING AND INSTALLATION

This chapter provides unpacking and installation information for the Switch.

Unpacking

Open the shipping cartons of the Switch and carefully unpacks its contents. The carton should contain the following items:

- ◆ One 24+4G-Port 10/100/1000Mbps Gigabit Ethernet Web Smart Switch
- ◆ One AC power cord, suitable for your area's electrical power connections
- ◆ Four rubber feet to be used for shock cushioning
- ◆ Screws and two mounting brackets
- ◆ CD-Rom with Web Management Utility and User's Guide

If any item is found missing or damaged, please contact your local reseller for replacement.

Installation

The site where you install the hub stack may greatly affect its performance. When installing, consider the following pointers:

Install the Switch in a fairly cool and dry place. See ***Technical Specifications*** for the acceptable temperature and humidity operating ranges.

Install the Switch in a site free from strong electromagnetic field generators (such as motors), vibration, dust, and direct exposure to sunlight.

Leave at least 10cm of space at the front and rear of the hub for ventilation.

Install the Switch on a sturdy, level surface that can support its weight, or in an EIA standard-size equipment rack. For information on rack installation, see the next section, Rack Mounting.

When installing the Switch on a level surface, attach the rubber feet to the bottom of each device. The rubber feet cushion the hub and protect the hub case from scratching.

Rack Mounting

The switch can be mounted in an EIA standard-size, 19-inch rack, which can be placed in a wiring closet with other equipment. Attach the mounting brackets at the switch's front panel (one on each side), and secure them with the provided screws.

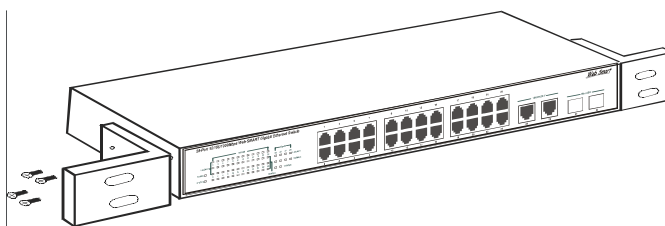


Figure 1. Combine the Switch with the provided screws

Then, use screws provided with the equipment rack to mount each switch in the rack.

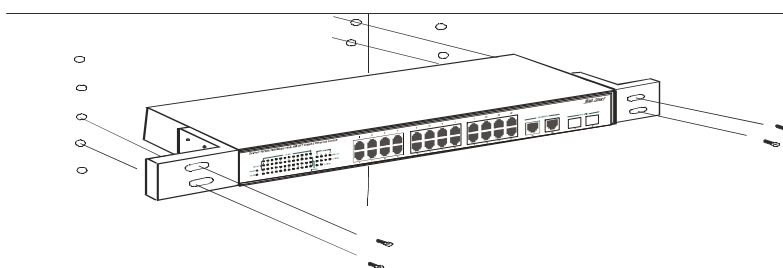


Figure 2. Mount the Switch in the rack

Connecting Network Cable

The Switch supports 10Mbps Ethernet or 100Mbps Fast Ethernet and it runs both in half and full duplex mode using two pair of Category 5 cable.

The Switch also supports 2-Ports 1000Mbps Gigabit Ethernet that runs in Auto-negotiation mode and 10Mbps Ethernet or 100Mbps Fast Ethernet that runs both in half and full duplex mode and 1000Mbps Gigabit Ethernet runs in full duplex mode using four pair of Category 5 Cable.

These RJ45 ports are Auto-MDI type port. The Switch can auto transform to MDI-II or MDI-X type, so you can just make an easy connection that without worrying if you are using a standard or crossover RJ45 cable.

There are additional 2 ports mini-GBIC slot for optional mini-GBIC module.

AC Power

The Switch used the AC power supply 100-240V AC, 50-60 Hz. The power switch is located at the rear of the unit adjacent to the AC power connector and the system fan. The switch's power supply will adjust to the local power source automatically and may be turned on without having any or all LAN segment cables connected.

IDENTIFYING EXTERNAL COMPONENTS

This chapter describes the front panel, rear panel, and LED indicators of the Switch.

Front Panel

The figure below shows the front panels of the Switch.

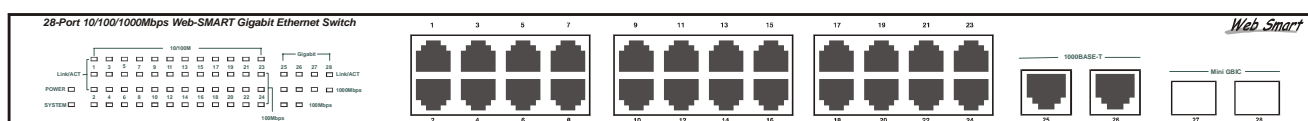


Figure 3. Front panel of 24+4G-port Gigabit Ethernet Switch

LED Indicator:

Comprehensive LED indicators display the status of the switch and the network (see the LED Indicators chapter below).

Fast Ethernet Ports (Port 1~24):

These ports support network speeds of either 10Mbps or 100Mbps, and can operate in half- and full- duplex transfer modes. These ports also supports automatic MDI/MDIX crossover detection function gives true “plug and play” capability, just need to plug-in the network cable to the hub directly and don’t care if the end node is NIC (Network Interface Card) or switch and hub.

Gigabit Ethernet Ports (Port 25~26):

The Switch is equipped with two Gigabit twisted pair ports, supported auto negotiable 10/100/1000Mbps and auto MDI/MDIX crossover detection function. These two ports can operate in half-duplex mode for 10/100Mbps and full- duplex mode for 10/100/1000Mbps.

mini-GBIC Ports (Port 27~28):

The Switch is equipped with two mini-GBIC ports, supported optional 1000BASE-SX/LX mini-GBIC module.

Note: When the port was set to “Forced Mode”, the Auto MDI/MDIX will be disabled.

Rear Panel



Figure 4. Rear panel of the Switch

Power Switch:

This is a switch where you can control to enable or disable the power.

AC Power Connector:

This is a three-pronged connector that supports the power cord. Plug in the female connector of the provided power cord into this connector, and the male into a power outlet. Supported input voltages range from 100-240V AC at 50-60Hz.

Reset:

The Reset button is to reset all the setting back to the factory default.

Note: Be sure that you recorded the setting of your device, else all the setting will be erased when pressing the “Reset” button.

UNDERSTANDING LED INDICATORS

The front panel LEDs provides instant status feedback, and, helps monitor and troubleshoot when needed.

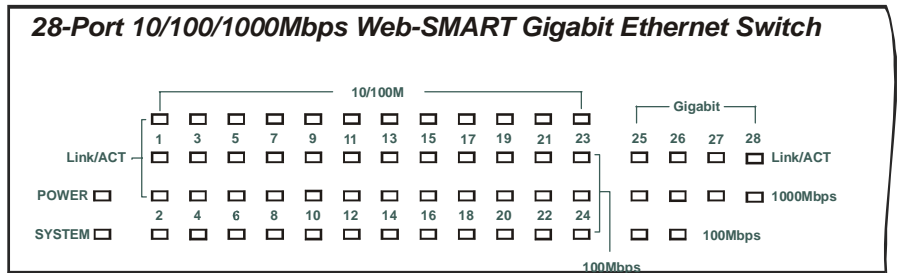


Figure 5. LED indicators of the Switch

Power and System LEDs

POWER: Power Indicator

On	:	When the Power LED lights on, the Switch is receiving power.
Off	:	When the Power turns off or the power cord has improper connection.

SYSTEM: Management Indicator

Blinking	:	When the CPU is working, the System LED is blinking.
On/Off	:	The CPU is not working.

Ports 1~24 10/100M Status LEDs

Link/ACT: Link/Activity

On	:	When the Link/ACT LED lights on, the respective port is successfully connected to an Ethernet network.
Blinking	:	When the Link/ACT LED is blinking, the port is transmitting or receiving data on the Ethernet network.
Off	:	No link.

100Mbps

On	:	When the 100Mbps LED lights on, the respective port is connected to a 100Mbps Fast Ethernet network.
Off	:	When the respective port is connected to a 10Mbps Ethernet network

Ports 25~26 Gigabit Status LEDs

Link/ACT: Link/Activity

On	:	When the Link/ACT LED lights on, the respective port is successfully connected to an Ethernet network.
Blinking	:	When the Link/ACT LED is blinking, the port is transmitting or receiving data on the Ethernet network.
Off	:	No link.

100Mbps

On	:	When the 100Mbps LED lights on, the respective port is connected to a 100Mbps Fast Ethernet network.
Off	:	When the respective port is connected to a 10Mbps Ethernet or 1000Mbps Gigabit Ethernet network.

1000Mbps

On	:	When the 1000Mbps LED lights on, the respective port is connected to a 1000Mbps Gigabit Ethernet network.
Off	:	When the respective port is connected to a 10Mbps Ethernet or 100Mbps Fast Ethernet network

Ports 27~28 mini-GBIC Status LEDs

Link/ACT: Link/Activity

On	:	When the mini-GBIC module is installed and connected to a network, the Link/ACT LED lights on.
Blinking	:	When the LED is blinking, the mini-GBIC module is receiving data on a network.
Off	:	No link.

1000Mbps

On	:	When the 1000Mbps LED lights on, the respective port is connected to a 1000Mbps Gigabit Ethernet network.
Off	:	When the respective port is disconnected to the network

CONFIGURATION

Through the Web Browser you can configure the Switch such as VLAN, Trunking, QoS... etc.

With the attached Web Management Utility, you can easily discover all the Web Management Switch, assign the IP Address, changing the password and upgrading the new firmware.

Installing the Web Management Utility

The following gives instructions guiding you through the installations of the Web Management utility.

1. Insert the Utility CD in the CD-Rom Drive.
2. From the **Start** menu on the Windows desktop, choose **Run**.
3. In the **Run** dialog box, type D:\Web Management Utility\setup.exe (D:\ depends where your CD-Rom drive is located) and click **OK**.
4. Follow the on-screen instructions to install the utility.
5. Upon completion, go to **Program Files** -> **web_management_utility** and execute the Web Management utility. (Figure 6.)

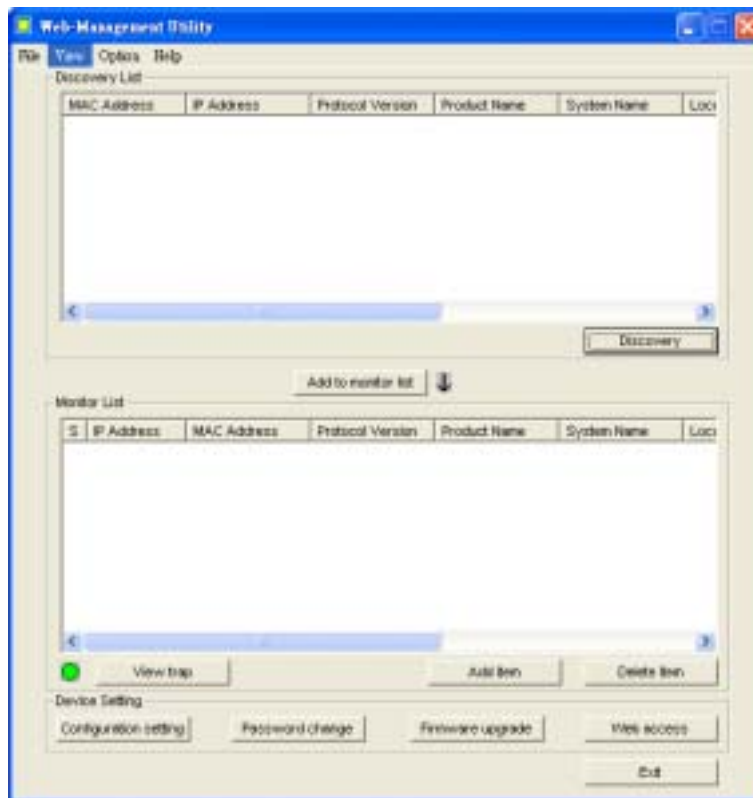


Figure 6. Web Management Utility

The Web Management Utility was divided into four parts, ***Discovery List***, ***Monitor List***, ***Device Setting*** and ***Toolbar function***, for details instruction, follow the below section.

Discovery List

This is the list where you can discover all the Web management devices in the entire network.

By pressing the “***Discovery***” button, you can list all the Web Management devices in the discovery list.

Double click or press the “***Add to monitor list***” button to select a device from the Discovery List to the Monitor List.


System word definitions in the Discovery List:

- **MAC Address:** Shows the device MAC Address.
 - **IP Address:** Shows the current IP address of the device.
 - **Protocol version:** Shows the version of the Utility protocol.
 - **Product Name:** Shows the device product name.
 - **System Name:** Shows the appointed device system name.
 - **Location:** Shows where the device is located.
 - **Trap IP:** Shows the IP where the Trap to be sent.
 - **Subnet Mask:** Shows the Subnet Mask set of the device.
 - **Gateway:** Shows the Gateway set of the device.
-

Monitor List

All the Web Smart Device in the Monitor List can be monitored; you can also receive the trap and show the status of the device.

System word definitions in the Monitor List:


- **S:** Shows the system symbol of the Web-Smart device,  represent for device system is not alive.
 - **IP Address:** Shows the current IP address of the device.
 - **MAC Address:** Shows the device MAC Address.
 - **Protocol version:** Shows the version of the Utility protocol.
 - **Product Name:** Shows the device product name.
 - **System Name:** Shows the appointed device system name.
 - **Location:** Shows where the device is located.
 - **Trap IP:** Shows the IP where the Trap to be sent.
 - **Subnet Mask:** Shows the Subnet Mask set of the device.
 - **Gateway:** Shows the Gateway set of the device.
-

View Trap: The Trap function can receive the events that happen from the Web Management Switch in the Monitor List.

There is a light indicator behind the “*View Trap*” button, when the light indicates in green, it means that there is no trap transmitted, and else when it indicates in red, it means that there is new trap transmitted, this is to remind us to view the trap. (Figure 7)



When the “*View Trap*” button is clicked, a Trap Information window will pop out, it will show the trap information including the Symbol, Time, Device IP and the Event occurred. (Figure 8)

The symbol “” represents the trap signal arise, this symbol will disappear after you review and click on the event record.

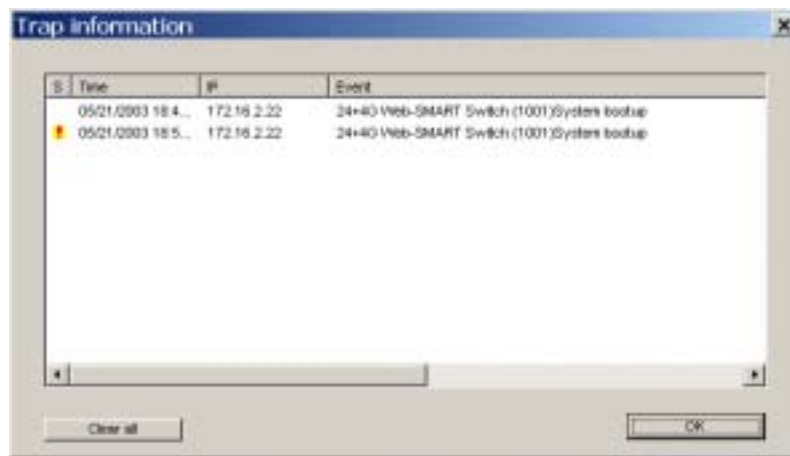


Figure 8.

Note: In order to receive Trap information, switch has to be configured with Trap IP and Trap Events in Web browser, which are available in the Trap Setting Menu (see Page 40 for detail).

Add Item: To add a device to the Monitor List manually, enter the IP Address of the device that you want to monitor.

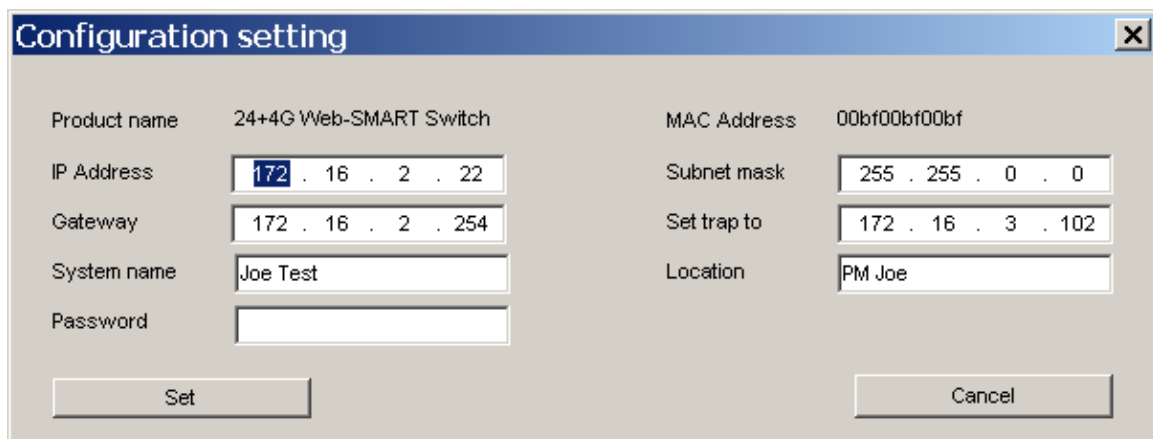
Delete Item: To delete the device in the Monitor List.

Device Setting

You can set the device by using the function key in the Device Setting Dialog box.

Configuration Setting: In this Configuration Setting, you can set the IP Address, Subnet Mask, Gateway, Set Trap to (Trap IP Address), System name and Location.

Select the device in the Discovery list or Monitor List and press this button, then the Configuration Setting window will pop out as Figure 9, after filling up the data that you want to change, you must fill up the password and press the “Set” to process the data changed immediately.



Product name	24+4G Web-SMART Switch	MAC Address	00bf00bf00bf
IP Address	172 . 16 . 2 . 22	Subnet mask	255 . 255 . 0 . 0
Gateway	172 . 16 . 2 . 254	Set trap to	172 . 16 . 3 . 102
System name	Joe Test	Location	PM Joe
Password			

Set Cancel

Figure 9. Configuration Setting

Password Change: You can use this Password Change when you need to change the password, fill in the password needed in the dialog box and press “Set” button to proceed the password change immediately.

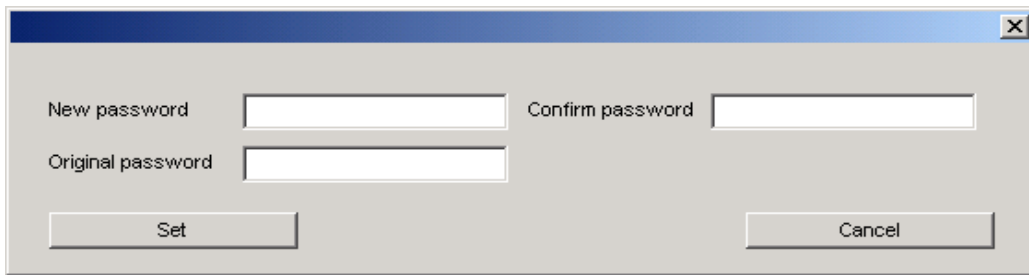


Figure 10. Password Change

Firmware Upgrade: When the device has a new function, there will be a new firmware to update the device, use this function to update.

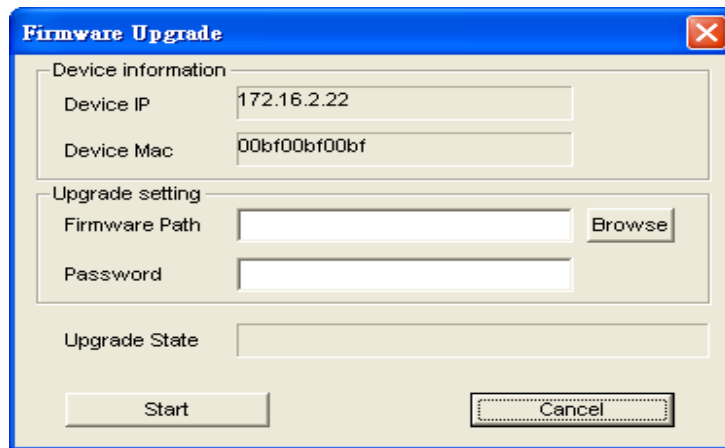


Figure 11.

Web Access: Double click the device in the Monitor List or select a device in the Monitor List and press this “*Web Access*” button to access the device in Web browser.

Toolbar

The toolbar in the Web Management Utility have four main tabs, File, View, Options and Help.

In the “*File TAB*”, there are Monitor Save, Monitor Save As, Monitor Load and Exit.

Monitor Save: To record the setting of the Monitor List to the default, when you open the Web Management Utility next time, it will auto load the default recorded setting.

Monitor Save As: To record the setting of the Monitor List in appointed filename and file path.

Monitor Load: To manually load the setting file of the Monitor List.

Exit: To exit the Web Management Utility.

In the “**View TAB**”, there are view log and clear log function, this function will help you to show trap setting.

View Log: To show the event of the Web Management Utility and the device.

Clear Log: to clear the log.

In the “**Option TAB**”, there are Refresh Time function, this function helps you to refresh the time of monitoring the device. Choose **15 secs, 30 secs, 1 min, 2 min and 5 min** to select the time of monitoring.

In the “**Help TAB**”, there is About function, it will show out the version of the Web Management Utility.

Configuring the Switch

The 24+4G-Port 10/100/1000Mbps Gigabit Ethernet Web Smart Switch has a Web GUI interface for smart switch configuration. The Switch can be configured through the Web Browser. A network administrator can manage, control and monitor the switch from the local LAN. This section indicates how to configure the Switch to enable its smart functions including:

- ◆ Port Setting (Speed/Disable, Duplex mode, Flow Control and Port base QoS)
 - ◆ Virtual LAN Group setting (VLAN)
 - ◆ Trunking
 - ◆ Port Mirroring
 - ◆ System Setting
 - ◆ Device status and Statistic
-

Login

Before you configure this device, note that when the Web Smart Switch is configured through an Ethernet connection, make sure the manager PC must be set on same the **IP network**. For example, when the default network address of the default IP address of the Web Smart Switch is **192.168.0.1**, then the manager PC should be set at 192.168.0.x (where x is a number between 2 and 254), and the default subnet mask is 255.255.255.0.

Open Internet Explorer 5.0 or above Web browser.

Enter IP address **http://192.168.0.1** (the factory-default IP address setting) to the address location.



Figure 12.

Or through the Web Management Utility, you do not need to remember the IP Address, select the device shown in the Monitor List of the Web Management Utility to settle the device on the Web Browser.

When the following dialog page appears, remain enter the default password "*admin*" and press Login to enter the main configuration window.



Login	
System Name :	
Location Name :	
IP Address :	192.168.0.1
MAC Address :	00-11-22-33-44-55
password	<input type="text"/> <input type="button" value="Login"/>

Figure 13.

After entering the password, the main page comes up, the screen will display the device status.



28-Port 10/100/1000Mbps Web-SMART Gigabit Ethernet Switch

Setup

- Port
- VLAN
- Trunk
- Mirror

Maintenance

- Status
- Statistics
- System
- Trap
- Password
- Backup Setting
- Reset Setting

Logout

SYSTEM Status

Product Name	24+40 Web-SMART Switch
Firmware Version	1.00.14
Protocol Version	2.001.001
IP Address	172.16.2.22
Subnet mask	255.255.255.0
Default gateway	172.16.2.254
Trap IP	0.0.0.0
MAC address	00-bf-00-bf-00-bf
System Name	Joe Test
Location Name	PM Joe
Login Timeout (minutes)	30
System Up Time	0 days 0 hours 4 mins 30 seconds

PORT Status

Figure 14. Device Status

Setup Menu

When the main page appears, find the *Setup menu* in the left side of the screen (Figure 15). Click on the setup item that you want to configure. There are eleven options: *Port Settings*, *VLAN Settings*, *Trunk Setting*, *Mirror Setting*, *Device Status*, *Statistic*, *System Settings*, *Trap Setting*, *Password Setting*, *Backup Setting* and *Reset Setting* as shown in the Main Menu screen.

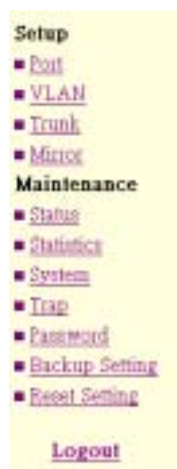


Figure 15. Setup menu

Configuring Setup Setting

Find that there are four items, including *Port Settings*, *VLAN Settings*, *Trunk Settings* and *Mirror Settings* in Setup menu.

Port Settings

In Port Settings menu (Figure 16), this page will show each port's status, press the ID parameter to set each port's *Speed*, *Flow Control*, *QoS priority* and *Link Status*. When you need to renew the posted information, press the "Refresh" button.

The *Link Status* in the screen will show the connection speed and duplex mode; else this dialog box will show **down** when the port is disconnected.

PORT Setting									
10/100 Mbps									
ID	Speed	Flow Control	QoS	Link Status	ID	Speed	Flow Control	QoS	Link Status
01	Auto	Enable	Normal	Down	13	Auto	Enable	Normal	100M Full
02	Auto	Enable	Normal	Down	14	Auto	Enable	Normal	Down
03	Auto	Enable	Normal	100M Full	15	Auto	Enable	Normal	Down
04	Auto	Enable	Normal	Down	16	Auto	Enable	Normal	Down
05	Auto	Enable	Normal	Down	17	Auto	Enable	Normal	Down
06	Auto	Enable	Normal	Down	18	Auto	Enable	Normal	Down
07	Auto	Enable	Normal	Down	19	Auto	Enable	Normal	Down
08	Auto	Enable	Normal	Down	20	Auto	Enable	Normal	Down
09	Auto	Enable	Normal	Down	21	Auto	Enable	Normal	Down
10	Auto	Enable	Normal	Down	22	Auto	Enable	Normal	Down
11	Auto	Enable	Normal	Down	23	Auto	Enable	Normal	Down
12	Auto	Enable	Normal	Down	24	Auto	Enable	Normal	Down
1000 Mbps									
ID	Speed	Flow Control	QoS	Link Status	ID	Speed	Flow Control	QoS	Link Status
25	Auto	Enable	Normal	Down	26	Auto	Enable	Normal	Down
Fiber 1000 Mbps									
ID	Speed	Flow Control	QoS	Link Status	ID	Speed	Flow Control	QoS	Link Status
27	Auto	Enable	Normal	Down	28	Auto	Enable	Normal	Down

Figure 16. Port Configuration

To change the port setting, click on the ID parameter to enter to the selected port to configure its Speed/Disable, Flow control and QoS setting.

PORT Settings

Please note that speed mode must be selected as same as the link partner.
Otherwise, packet loss or link error might occur.

ID	Speed	Flow Control	QoS
03	Auto	On	Normal

Apply Back

Figure 17.

Speed/Disable:

This setting has six modes—*100M Full*, *100M Half*, *10M Full*, *10M Half*, *Auto* and *Disable*—for speed or port disable selections.

Flow Control:

This setting determines whether or not the Switch will be handling flow control. Set *FlowCtrl* to *Enable* for avoiding data transfer overflow. Or it sets to *Disable*; there is either no flow control or other hardware/software management.

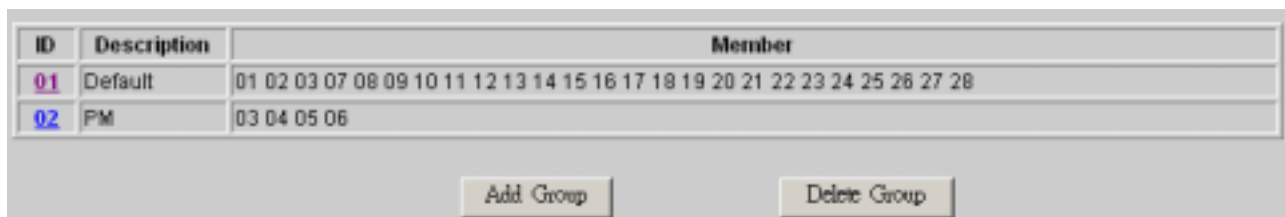
When the port is set to *forced mode*, then the flow control will automatically set to *Disable*.

QoS:

In some ports that need to have a high priority to manage the data transfer, QoS should be change. Set the port's QoS to high to determine the port will always transfer their data first.

VLAN Settings (Virtual Local Area Network)

Group individual ports into a small “Virtual” network of their own to be independent of the other ports. To add a VLAN group, press “Add Group” button, the new VLAN configuration window will pop out, you can fill in the description in order to describe this VLAN Group, check on the port to be a member to this VLAN Group, and press “*Apply*” button to execute the setting.



ID	Description	Member
01	Default	01 02 03 07 08 09 10 11 12 13 14 15 16 17 18 19 20 21 22 23 24 25 26 27 28
02	PM	03 04 05 06

Add Group Delete Group

Figure 19. VLAN Group Settings

Once you want to modify the VLAN Group, check on the ID parameter, the ID VLAN configuration window will pop out.



Figure 20. VLAN Settings

Trunk Setting

The Trunk function enables to cascade two devices with a double times bandwidth (up to 4000Mbps in full duplex mode).

There is only one selection for the trunk setting, port 25 and port 26, or select “disable” for closing this function.

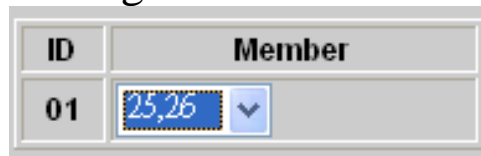


Figure 21. Trunk Settings

Be sure that the selected trunk setting port must connect to the device with a same VLAN group.

Mirror Setting

Port Mirroring is a method of monitoring network traffic that forwards a copy of each incoming and/or outgoing packet from one port of a network switch to another port where the packet can be studied. It enables the manager to keep close track of switch performance and alter it if necessary.

Configuring the port mirroring by assigning a source port from which to copy all packets and a sniffer port where those packets will be sent.

The selection of the sniffer mode is as follow:

TX (transmit) mode: this mode will duplicate the data transmit from the source port and forward to the sniffer port.

RX (receive) mode: this mode will duplicate the data that send to the source and forward to the sniffer port.

Both (transmit and receive) mode: this mode will duplicate both the data transmit from and data that send to the source port, then it will forward to the sniffer port.



Figure 22.

Device Status

Click on the “*Status*” to present the device status on this screen, it will show the System Status, Port Status, VLAN Status, Trunk Status and Mirror Status..

Press “*Refresh*” when you need to renew the posted information.

Statistic

The Statistic Menu screen will show the status of each port packet count.

ID	Tx OK	Rx OK	Tx Error	Rx Error	ID	Tx OK	Rx OK	Tx Error	Rx Error
10/100 Mbps (packets)									
01	0	0	0	0	13	0	0	0	0
02	0	0	0	0	14	0	0	0	0
03	0	0	0	0	15	0	0	0	0
04	0	0	0	0	16	0	0	0	0
05	0	0	0	0	17	0	0	0	0
06	0	0	0	0	18	0	0	0	0
07	0	0	0	0	19	0	0	0	0
08	0	0	0	0	20	0	0	0	0
09	0	0	0	0	21	0	0	0	0
10	0	0	0	0	22	0	0	0	0
11	0	0	0	0	23	0	0	0	0
12	2728	672845	0	0	24	0	0	0	0
1000 Mbps (packets)									
25	0	0	0	0	26	0	0	0	0
Fiber 1000 Mbps (packets)									
27	0	0	0	0	28	0	0	0	0

Figure 23. Statistic

For Detail packet information, click on the ID parameter as Figure 24.

Port	01		
TX			
Bytes	0x40+0		
DropPkts	0	MultipleCollision	0
BroadcastPkts	0	DeferredTransmit	0
MulticastPkts	0	LateCollision	0
UnicastPkts	0	ExcessiveCollision	0
Collisions	0	FramehDisc	0
SingleCollision	0	PausePkt	0
RX			
Bytes	0x40+0		
Jabbers	0	OversizePkts	0
PausePkts	0	AlignmentErrors	0
DropPkts	0	FCSErrors	0
MulticastPkts	0	UnicastPkts	0
SAClanges	0	BroadcastPkts	0
ExcessSizeDisc	0	Fragments	0
UndersizePkt	0	SymbolError	0
Pkts64 Bytes	0	Pkts65to127 Bytes	0
Pkts128to255 Bytes	0	Pkts256to511 Bytes	0
Pkts512to1023 Bytes	0	Pkts1024to1522 Bytes	0

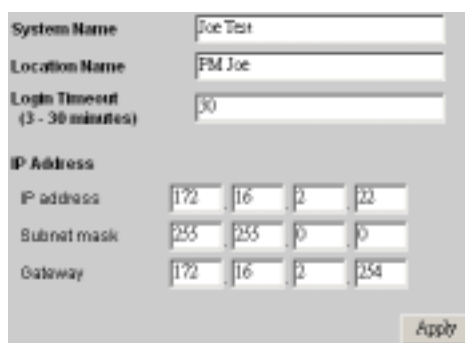
Figure 24.

System Setting

The System Setting includes the System name, Location name, Login Timeout, IP Address, Subnet Mask and Gateway. Through the Web Management Utility, you can easily recognize the device by using the System Name and the Location Name.

The Login Timeout is to set the idle time-out for security issue, when there is no action when running the Web Smart Utility and the time is up, you must re-login to Web Smart Utility before you set the Utility.

Fill up the IP Address, Subnet Mask and Gateway for the device.



The screenshot shows a web form for System Setting. It contains the following fields and values:

System Name	Joe Test
Location Name	FM Joe
Login Timeout (3 - 30 minutes)	30
IP Address	
IP address	172 16 2 22
Subnet mask	255 255 0 0
Gateway	172 16 2 254
Apply	

Figure 25.

Trap Setting

The Trap Setting enables the device to monitor the Trap through the Web Management Utility, set the Trap IP Address of the manager where the trap to be sent.



The screenshot shows a web form for Trap Setting. It contains the following fields and values:

Trap IP	172 16 2 22
System Events	<input checked="" type="checkbox"/> link lost <input checked="" type="checkbox"/> illegal login
Filter Port Events	<input checked="" type="checkbox"/> inserted / removed <input checked="" type="checkbox"/> link up / link down <input checked="" type="checkbox"/> alarm mail receive error <input checked="" type="checkbox"/> alarm mail transmission error
Copper Port Events	<input checked="" type="checkbox"/> alarm mail receive error <input checked="" type="checkbox"/> alarm mail transmission error
Apply	

Figure 26. Trap Setting

◆ **System Events:** Monitoring the system's trap.

Device Bootup: a trap when booting up the system.

Illegal Login: a trap when there is using a wrong password login, and it will record from where the IP to be login.

◆ **Fiber Port Events:** Monitoring the Fiber port status.

Link Up/Link Down: a trap when there is linking status happens in fiber port.

Abnormal* Receive Error: a trap when there are receive data error in fiber port.

Abnormal* Transmit Error: a trap when there are transmit data error in fiber port.

◆ **Copper Port Events:** Monitoring the copper port status.

Abnormal* Receive Error: a trap when there are receive data error in copper port.

Abnormal* Transmit Error: a trap when there are transmit data error in copper port.

Abnormal: 50 error packet count within 10 seconds.*

Set Password

Password is the invaluable tool for the manager to secure Web Management Switch, use this function to change the password.

If you forget the password, press the “Reset” button in the rear panel of the Switch, the current setting includes VLAN, Port Setting... etc. will be lost and the Switch will restore to the default setting.

The maximum length is 20 and is case-sensitive.

Old Password

New Password

Re-type New Password

Figure 27. Set Password

Backup Setting

The backup tools help you to backup the current setting of the Switch. Once you need to backup the setting, press the “**Backup**” button to save the setting.

To restore a current setting file to the device, you must specify the backup file and press “**Restore**” button to proceed the setting of the recorded file.

Backup Setting

Please be aware that the device will reboot after config restore successfully.

Backup current setting to file :

Restore saved setting from file :

Figure 28. Backup Setting

Note: when restoring a recorded file, the current password will not be erased.

Reset Setting

The Factory Reset button helps you to reset the device back to the default setting from the factory. Be aware that the entire configuration will be reset, the IP address of the device will be set to default setting 192.168.0.1.

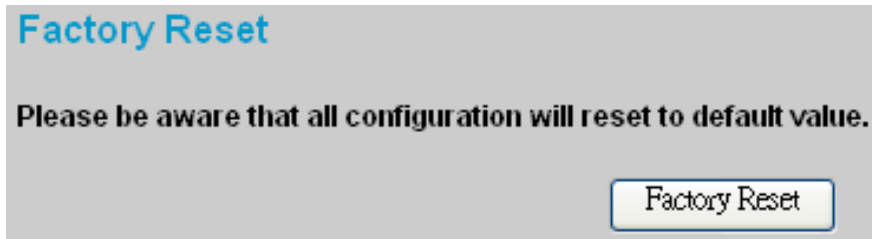


Figure 29. Reset Setting

Logout

When press this function, the web configuration will go back to first Login page.

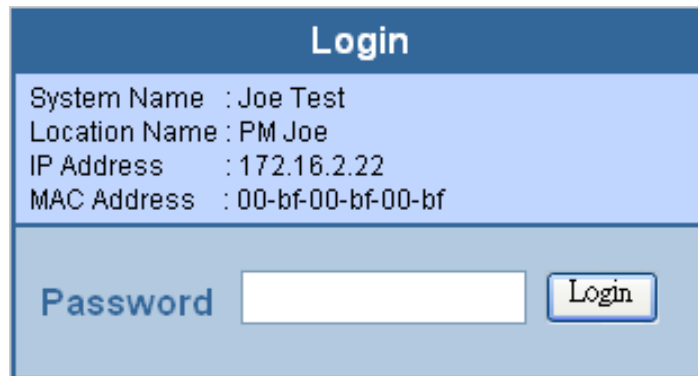


Figure 30. Logout

TECHNICAL SPECIFICATIONS

General	
Standards	IEEE 802.3 10BASE-T Ethernet IEEE 802.3u 100BASE-TX Fast Ethernet IEEE 802.3ab 1000BASE-T Gigabit Ethernet IEEE 802.3x Full Duplex Flow Control
Protocol	CSMA/CD
Data Transfer Rate	Ethernet: 10Mbps (half duplex), 20Mbps (full-duplex) Fast Ethernet: 100Mbps (half duplex), 200Mbps (full-duplex) Gigabit Ethernet: 2000Mbps (full-duplex)
Topology	Star
Network Cables	10BASE-T: 2-pair UTP Cat. 3, 4, 5; up to 100m 100BASE-TX: 2-pair UTP Cat. 5; up to 100m 1000BASE-T: 4-pair UTP Cat. 5; up to 100m Fiber module: mini-GBIC Fiber module
Number of Ports	24 × 10/100Mbps Auto-MDIX RJ45 ports 2 × 10/100/1000Mbps Auto-MDIX RJ45 ports 2 × mini-GBIC fiber slot
Physical and Environmental	
AC inputs	100-240V AC, 50-60 Hz internal universal power supply
Power Consumption	19Watts (Max)
Temperature	Operating: 0° ~ 40° C, Storage: -10° ~ 70° C
Humidity	Operating: 10% ~ 90%, Storage: 5% ~ 90%
Dimensions	440 x 200 x 44 mm (W x H x D)
EMI:	FCC Class A, CE Mark Class A, VCCI Class A
Safety:	cUL(UL60950), CB(IEC60950)

Performance

Transmits Method:	Store-and-forward
Filtering Address Table:	4K entries per device
Packet Filtering/Forwarding Rate:	10Mbps Ethernet: 14,880/pps 100Mbps Fast Ethernet: 148,800/pps 1000Mbps Gigabit Ethernet: 1,488,000/pps
MAC Address Learning:	Automatic update
Transmits Method:	Store-and-forward
RAM Buffer:	768K bytes per device